

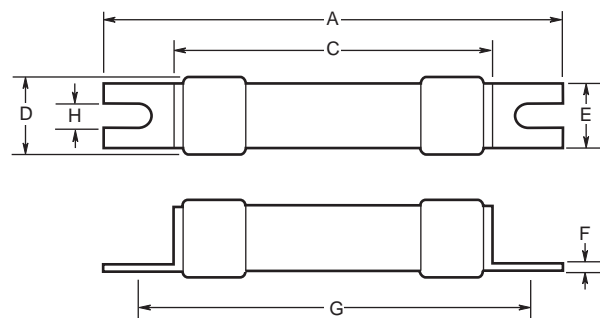
# HRCI-CA Industrial Ceramic Body Fuse

## Bolt-On Mounting

CIF21B



### Dimensional Data



CATALOG SYMBOL: CIF21B

1 - 30 Amps

600 Volts AC; 250 Volts DC

INTERRUPTING RATING: 200,000A RMS SYMMETRICAL

CSA C22.2 NO. 106-M92

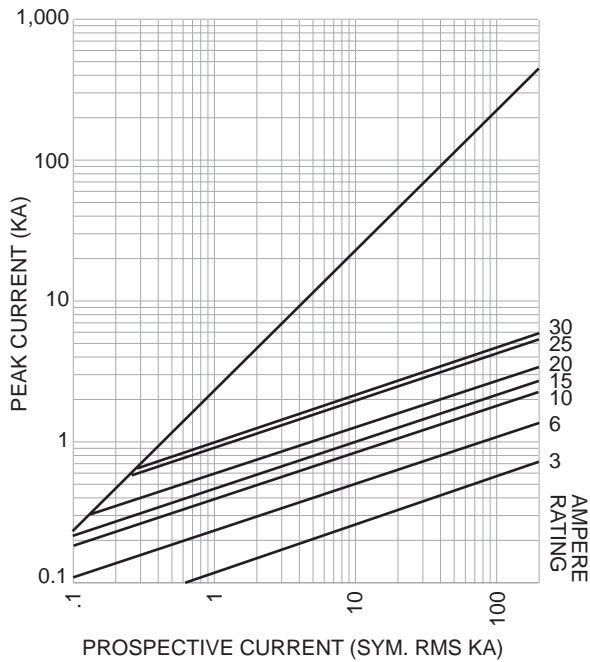
- Provides both overload and short-circuit protection to HRCI requirements.
- Offset blades for bolt-on mounting.
- CIF21B fuse fits the Bussmann-Camaster Fuseholder.

Type	Catalog Symbol	Amps	Dimensions in Inches and (mm)								
			Overall		Tags			Mounting		Body	
			A	E	F	G	H	C	D		
HRCI-CA	CIF21B	1-30A	2.15 (54.50)	.44 (11.10)	.03 (0.81)	1.75 (44.50)	.19 (4.70)	1.44 (35.50)	.54 (13.80)		

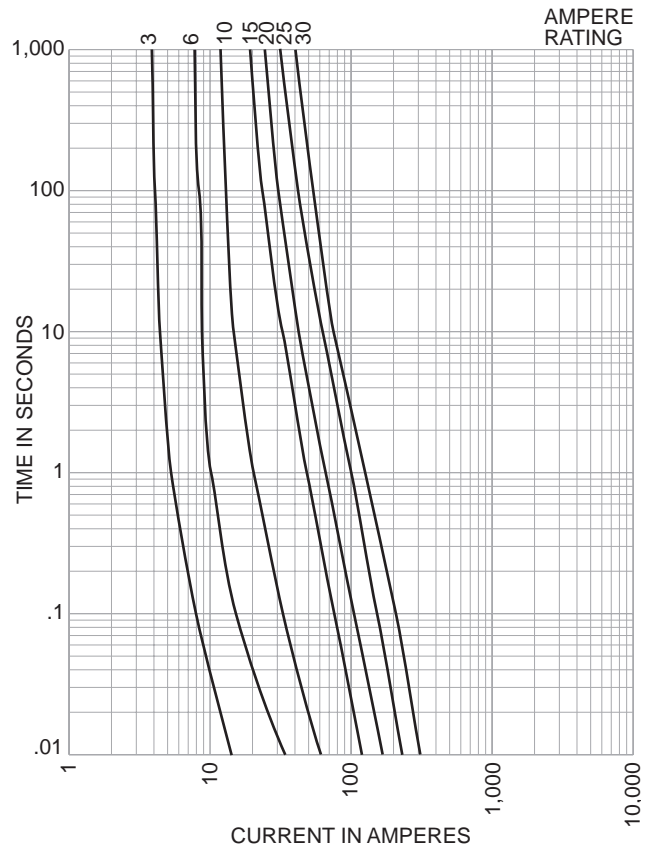
# HRCI-CA Industrial Ceramic Body Fuse Bolt-On Mounting

## CIF21B

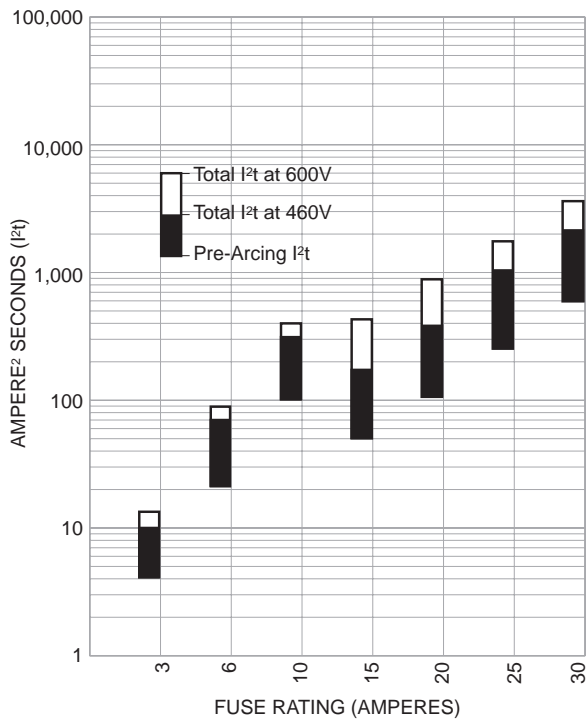
**Peak Let-Through Curves (Cat. No. CIF21B)**



**Time/Current-Curves (Cat. No. CIF21B)**



**Energy Let-Through Curves (Cat. No. CIF21B)**



Ref	Power Dissipation @ Rated Amps	
	Watts	
3CIF21B	1.8	
6CIF21B	1.5	
10CIF21B	3.4	
15CIF21B	2.4	
20CIF21B	3.2	
25CIF21B	3.6	
30CIF21B	3.6	

The only controlled copy of this BIF document is the electronic read-only version located on the Bussmann Network Drive. All other copies of this BIF document are by definition uncontrolled. This bulletin is intended to clearly present comprehensive product data and provide technical information that will help the end user with design applications. Bussmann reserves the right, without notice, to change design or construction of any products and to discontinue or limit distribution of any products. Bussmann also reserves the right to change or update, without notice, any technical information contained in this bulletin. Once a product has been selected, it should be tested by the user in all possible applications.